



CSA News

The Creation Science Association for Mid-America

"It is better to trust in the Lord than to put confidence in man."

Psalm 118:8

Volume 31: (11)

November 2014

In This Issue

"A New Local Museum Features Fossils of Kansas"

2015 January - June Monthly Meeting Topics

Non-CSAMA events:

**CMI Tour: "Exposing Evolution's Fatal Flaws KS ministry
with Dr. Jonathan Sarfati & Dr. Robert Carter"**

"Ha Ha Tonka Safari – 2014"

or

"Ha-Ha-Tonka-Smish-Smashonka-Saturnonka"

A New Local Museum Features Fossils of Kansas

by Douglas Roger Dexheimer

On Labor Day, several of us CSAMA members toured the new *Museum at Prairiefire*, located at 135th Street, just west of Nall, in Overland Park, Kansas.

We wanted to see just how the museum has handled the displays of some of the fossils with which we are quite familiar, particularly those which evolutionists find problematic to the teaching of evolution. As might be expected, the displays fully promote the concepts of Darwinian evolution. For all intents and purposes, the museum is a very costly and high-tech counterpart to the free *Museum of Natural History* located on the campus of Kansas University in Lawrence. The website for the *Museum at Prairiefire*¹ provides the following information:

- There is no admission charge to enter the Great Hall. Access to the small movie theater, bookstore, and "build your own fossil" area are open without charge.
- American Museum of Natural History Exhibition: \$14 Adults (13+) | \$8 Children (3-12).
- Discovery Room which has a number of "hands-on" areas where kids can handle stuff.
\$8 Adults (13+) | \$7 Children (3-12).
- all Access Day Pass: \$22 Adults (13+) | \$15 Children (3-12). Available only when Exhibition is on display.
- Children under the age of 3 are FREE.

You'll find the following statement interesting:

The Museum at Prairiefire (MAP) was established in 2010 based on a pioneering content partnership with the American Museum of Natural History (AMNH). Focused on enhancing public understanding of natural history and science, we are a "startup"

museum and will present an ongoing flow of world-class traveling exhibitions organized by the American Museum of Natural History. The museum also has a Discovery Room, which is an exciting gateway to science and natural history for children ages three and older, engaging permanent halls and experiences, education programs, science video and more. The Museum is the cultural anchor of Prairiefire, a 58-acre mixed-use project that integrates residential, office, retail and entertainment

Rotating semiannually, American Museum of Natural History traveling exhibitions will support and expand the Next Generation Science Standards, National Social Studies Standards and the Common Core State Standards.²

In other words, the curators of this museum are following the same educational format as the public schools: emphasize evolution as unquestioned fact at every turn, without apology or explanation. As an illustration of this, you'll see four levels of educational "standards" spelled out on their website: elementary, middle school, high school, and "Next Generation Science Standards."³ This last set of standards is a flagrant example of the unabashed policy of stressing evolution:

The collection of fossils and their placement in chronological order (e.g., through the location of the sedimentary layers in which they are found or through radioactive dating) is known as the fossil record. It documents the existence, diversity, extinction, and change of many life forms throughout the history of life on Earth. Analyze and interpret data for patterns in the fossil record that document the existence, diversity, extinction, and change of life forms throughout the history of life on Earth under the assumption that natural laws operate today as in the past.

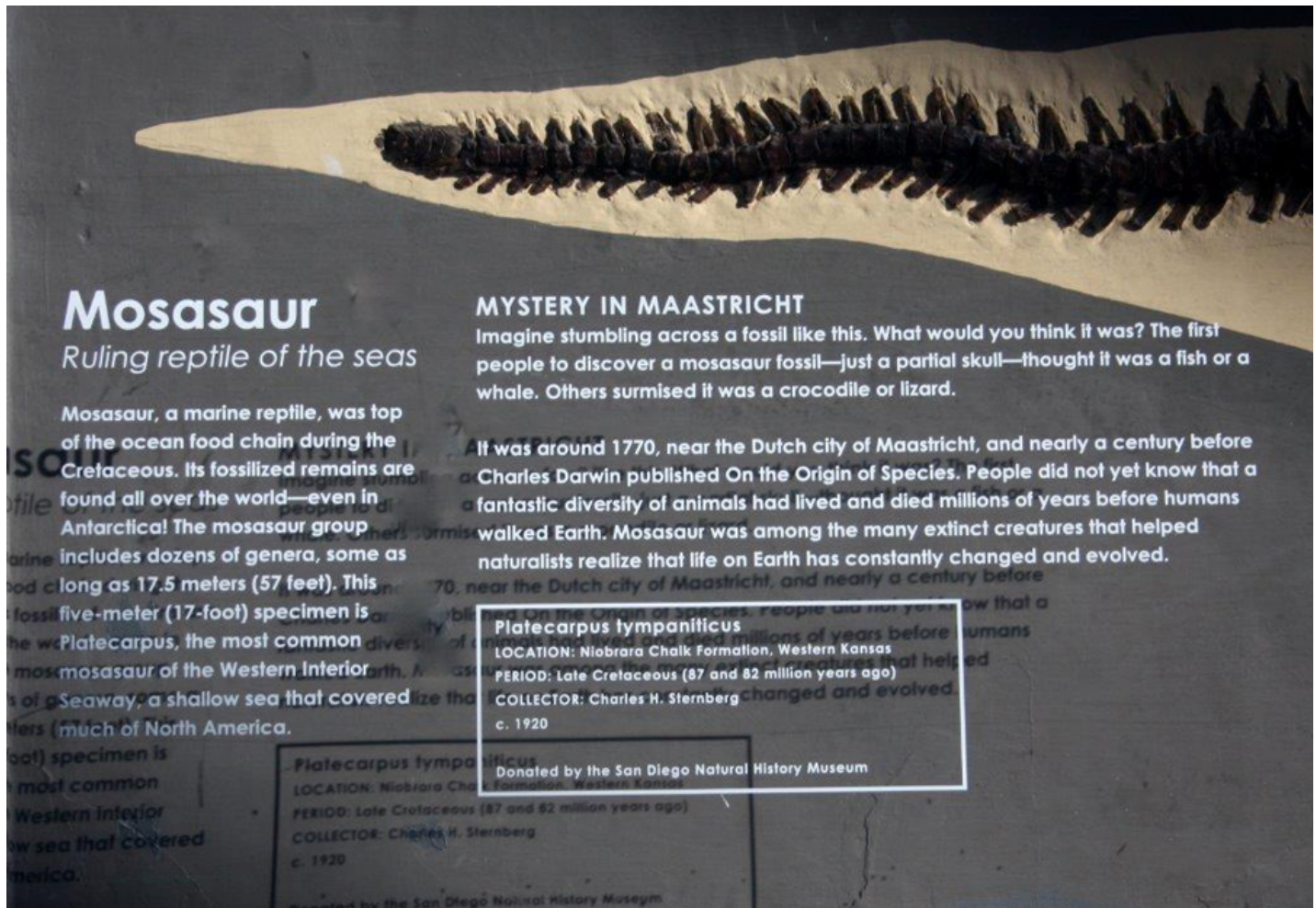
MS-LS4-2 Evidence of Common Ancestry and Diversity

Anatomical similarities and differences between various organisms living today and between them and organisms in the fossil record, enable the reconstruction of evolutionary history and the inference of lines of evolutionary descent. Apply scientific ideas to construct an explanation for the anatomical similarities and differences among modern organisms and between modern and fossil organisms to infer evolutionary relationships.

MS-LS4-4 Natural Selection

Natural Selection leads to the predominance of certain traits in a population, and the suppression of others... Construct an explanation based on evidence that describes how genetic variations of traits in a population increase some individuals' probability of surviving and reproducing in a specific environment.⁴

Currently, the "Mythical Creatures" exhibit is in town, for which the admission charge is \$14 per adult. This exhibit opened on August 30th. It features mythical creatures such as "DRAGONS, UNICORNS, & MERMAIDS." A number of dinosaur fossils and reconstructions are on display in this expensive and elaborate exhibit. The static displays have life-size copies of the fossils found in Kansas.



Mosasaur



Mosasaur



Xiphactinus

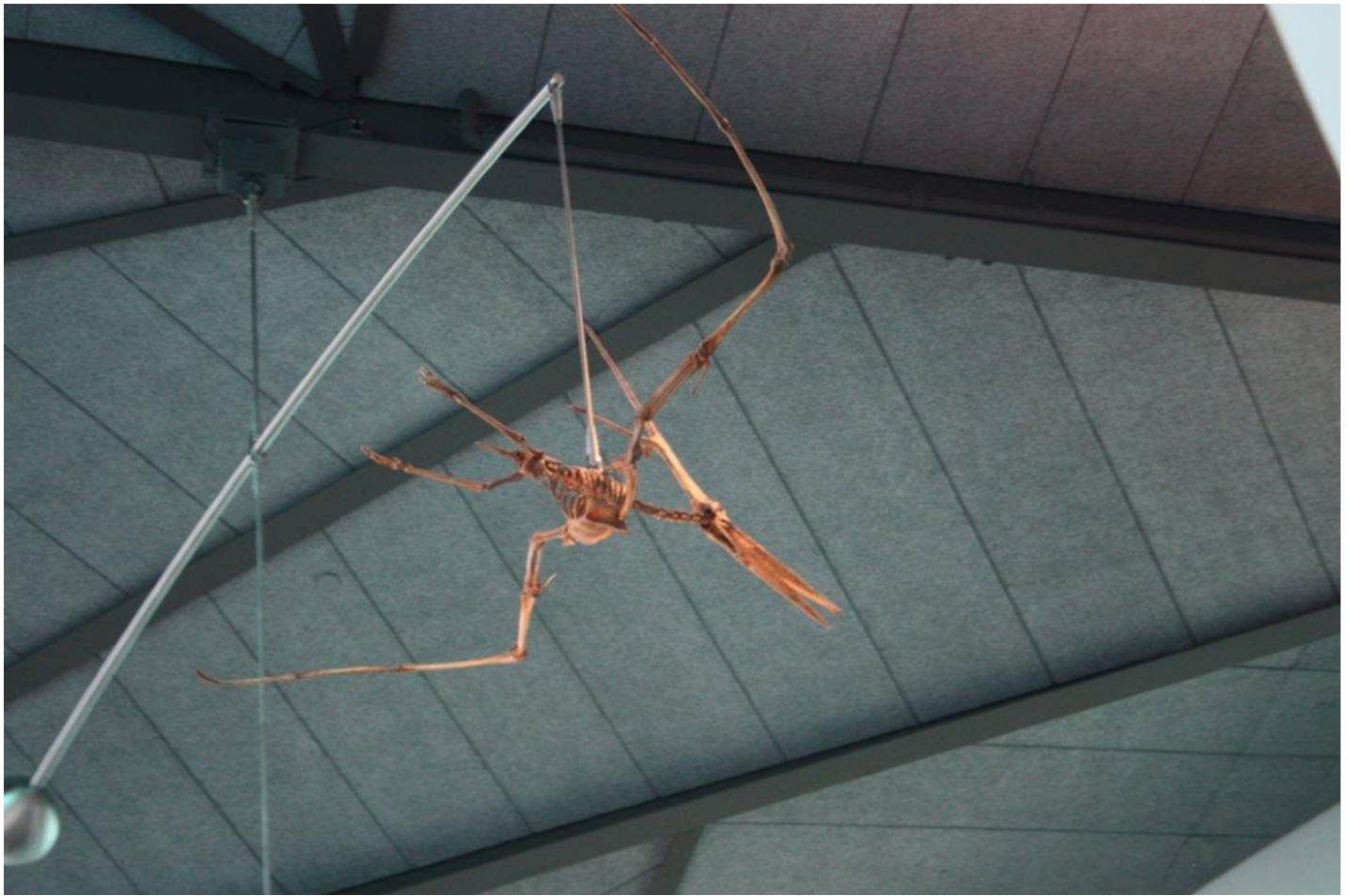
Mosasaur and Xiphactinus are presented as fossils originally found in Kansas. We immediately recognized these as graphic representations (not actual fossils, mind you) of fossils on display at the Sternberg Museum in Hayes, Kansas. The famous Sternberg fossil of a 6-foot fish inside a 15-foot fish is conspicuously absent from this museum, presumably because of the difficulties it presents for the evolutionary viewpoint of “gradual deposition” of fossils.



The *tyrannosaurus rex* fossil was supposedly found in Kansas as well, not by Sternberg, but by an earlier paleontologist, Barnum Brown (1875-1965). One of the displays shows the tools that fossil hunters have used, past and present.



The museum has two skeletons of the flying reptile, *pterosactyl*, both supported on a revolving overhead mobile.



Being displayed only as skeletons, their true wing dimensions cannot be ascertained by the casual observer.

Overall, the fossil displays are impressive, but naturally they represent the evolutionary viewpoint exclusively, leaving no room for any other possible viewpoint, model, or theory. We feel a visit to the museum would be worthwhile, if only to view the colorful and conspicuous consumption of dichroic glass that surrounds the great hall.

Outside the building are growing native wildflowers typical of the Kansas prairie. Interestingly, the hi-tech glass seems to transmit the vivid colors of some of those flowers... designed by our Creator.





¹ <http://www.visitprairiefire.com/museum/>

² <http://museumatpf.org/about-us/>

³ http://museumatpf.org/wp-content/uploads/2014/08/MAP_MythicCreaturesStandards.pdf

⁴ Ibid.

Ω

December Monthly Meeting

Tuesday, December 2th

“Hegelian Implications”

by *Dave Penny*

George Wilhelm Hegel, a German philosopher who died in 1831, introduced his Hegelian *triad* (i.e., *thesis*, *antithesis*, and *synthesis*), which was transformed by the *Young*, or *Left*, Hegelians into a worldview philosophy which denies the existence of absolute truth. The belief that the universe is based on absolutes, which belief, earlier, even atheistic philosophers held, assumes that those absolutes were established by an external, supernatural God. After Hegel, atheistic philosophers in every field of knowledge developed a *Hegelian triad worldview* which replaced the formerly predominant *deistic absolutism*. The final field of this developmental process occurred in the “hard sciences,” reaching into Einstein's theories of relativity in the early 1900's. Today academia and pop culture are captives of the resultant *Hegelianism*.

Ω

Monthly Meetings

2014

(1st Tuesday of each month; content subject to change; no sign up or registration necessary.)

- January 7th: “The Great Debate” DVD, moderated by *Bob Farwell*.
- February 4th: (cancelled due to weather).
- March 4th: “The Mystery of the Cambrian Fossil Record” DVD, moderated by *Bob Farwell*.

- April 1st: “Evolution vs. God” DVD, moderated by *Kevin Anderson*.
- May 6th: “Noah Extravaganza,” by *Kevin Anderson & Bill Cowherd*.
- June 3rd: “Radiometric Dating,” by *Dave Penny*.
- July 1st: “The Mystery of Our Declining Genes” DVD, moderated by *Bob Farwell*.
- August 5th: “The Ice Age - Only the Bible Explains It,” by Michael J. Oard DVD, moderated by *Kevin Anderson*.
- September 2nd: “Relativity and Creationism,” by *Dave Penny*.
- October 7th: “Every winged fowl, after his kind...,” by *Douglas Roger Dexheimer*.
- November 4th: “The Great Debate” DVD, moderated by *Bob Farwell*.
- December 2nd: “Hegelian Implications,” by *Dave Penny*.

2015

(1st Tuesday of each month; content subject to change; no sign up or registration necessary.)

- January 6th: “Formed to Fly” DVD, by Dr. David Menton, moderated by *Kevin Anderson*.
- February 3rd: “Expelled: No Intelligence Allowed” (the 2008 motion picture) DVD, moderated by *Bob Farwell*.
- March 3rd: “Lunar Eclipses,” by *Douglas Roger Dexheimer*.
- April 7th: “Canopy Theory,” by *Dave Penny*.
- May 5th: “Living Fossils Evolution: The Grand Experiment” Episode 2 DVD, moderated by *Bob Farwell*.
- June 2nd: “Evolution’s Achilles’ Heels” DVD, by Creation Ministries International, moderated by *Kevin Anderson*.

CSA Monthly Meeting Location

Westbrooke Church

9777 Antioch

Overland Park, KS 66121

10 blocks east of 69 Highway (or Switzer) on 95th St. to Antioch, south two blocks on Antioch, on east side of street.

Fellowship & book table: 6:15PM. Meeting: 7:00PM.

For detailed Monthly Meeting information:

www.csama.org

2015 January - June Monthly Meeting Details

(1st Tuesday of each month; content subject to change; no sign up or registration necessary.)

January 6th, 2015

“Formed to Fly” DVD

by Dr. David Menton
moderated by *Kevin Anderson*

Evolutionists have long argued that birds evolved by chance from reptiles. However, in this lecture you will see that no two classes of vertebrates differ more dramatically than do reptiles and birds. Unlike the dinosaurs, from which birds are said to have evolved, birds are truly “formed to fly.” With the aid of a scanning electron microscope, Dr. Menton examines the feathers of birds and compares them to reptile scales. Contrary to the claims of evolutionists, feathers are profoundly different from scales in every respect. It is biological nonsense to claim that one evolved from the other by chance.

February 4th, 2015

“Expelled: No Intelligence Allowed” DVD

(the 2008 motion picture)
moderated by *Bob Farwell*

American writer, lawyer, actor and commentator Ben Stein conducts on screen interviews with professors who have been fired for expressing views favoring the concepts of intelligent design in nature, as well as academics who support the mainline evolutionary viewpoint. Stein finds striking similarities between the views of the latter group and those of the supporters, past and present, of Nazism, Communism, eugenics, and abortion.

March 3rd, 2015

"Lunar Eclipses"

by *Douglas Roger Dexheimer*

The subject of *blood moons*, or *lunar tetrads* will be examined from different points of view:

1. Scriptural passages referring to *signs in the heavens*.
 2. Description of the Hebrew calendar, and calendar conversions.
 3. Scriptural references to the dates for *Passover* and *Sukkot*.
 4. Historical concurrences of blood moons with the above *feast days*.
 5. NASA catalogs of solar and lunar eclipses.
 6. Diagrams showing the intersections of *orbital planes*.
 7. Symmetry of eclipses during tetrads, past and present.
 8. Commentary by creationist astronomer, Dr. Danny Faulkner.
-

April 7th, 2015

“Canopy Theory”

by *Dave Penny*

The *canopy theory*, defined as “the waters above the firmament” in the second day of the Genesis 1 creation account, was popularized by Henry Morris and John Whitcomb in their book, *The Genesis Flood*. In the last thirty years this theory has fallen into disfavor among the majority of *young-earth creationists*. However, more recent thought and scientific observation have given rise to a renewed support for Morris' water canopy theory as being an integral part of the pre-Flood world, as well as of the Flood itself.

May 5th, 2015

“Living Fossils Evolution: The Grand Experiment” DVD

Episode 2

moderated by *Bob Farwell*

Dr. Carl Werner traveled 160,000 miles, visiting 10 dinosaur dig sites and 60 natural history museums over a period of 13 years to gather the information presented in this video. To his surprise, he found examples of all of the major plant divisions and all of the major animal phyla groups living today, fossilized alongside the dinosaurs.

The biggest discovery Dr. Werner made was that some of the most important fossils were not displayed in any of the museums he visited. Have natural history museums withheld these critical fossils from their public displays, because such fossils would place the theory of evolution in jeopardy?

Included in the video is spectacular underwater footage of Dr. Werner diving at the Great Barrier Reef in Australia and the coral reefs in the Caribbean Sea, plus footage from dinosaur dig sites in Europe and North America.

June 2nd, 2015

“Evolution’s Achilles’ Heels” DVD

by **Creation Ministries International**

moderated by *Kevin Anderson*

The purpose of this groundbreaking book and video project by CMI is to simply and concisely expose evolution’s fatal weaknesses. CMI believes evolution theory has no answer to these stated weaknesses, once properly explained and understood. The book this video is based upon is like no other work that CMI is aware of, in that it is authored exclusively by nine Ph.D. scientists. CMI's hope is that this fact alone will cause evolutionists to sit up and listen. All of these authors received their doctorates from secular universities very similar to those of their evolutionary counterparts. Each one of the authors is a specialist in his particular field of study. They include Drs. Don Batten, Jonathan Sarfati, Tas Walker, Rob Carter, Jim Mason, Emil Silvestru, John Hartnett, David Catchpoole, and Mark Harwood.

Ω

Non-CSAMA Events:

Creation Ministries International

Tour¹

“Exposing Evolution’s Fatal Flaws”

by Dr. Jonathan Sarfati² & Dr. Robert Carter³
(in person)

December 5 – 7, 2014 & January 25, 2015

Get Answers!

Does God exist? How can anyone believe in religion when science has neither a need nor a place for God? Is evolution happening today? If God is a God of love, why do we suffer and die?

Creation Ministries International is coming to your area soon with answers to these important questions. Come and hear Dr. Jonathan Sarfati expose the bankruptcy of the evolutionary myth. You'll be amazed to see how weak the scientific evidence for evolution is.

This is an issue that affects *everyone*. Evolution teaches us there is no need for God, there is no spiritual realm, and there is no afterlife. According to the theory, spirituality is just an evolutionary trick of the mind!

The Bible gives a very different picture about the nature of these things. At this presentation, you will learn how the scientific evidence, when properly understood, confirms the details of the biblical account. At the same time, we will answer many of the Big Questions.

Design, Deluge & Dilemma - Dr. Jonathan Sarfati

December 5, 2014, 1:00 PM

Heritage Christian School

2000 NW Clay Street

Topeka, Kansas 66608

Question & Answer time, Design, Deluge & Dilemma - Dr. Jonathan Sarfati

December 5, 2014, 7:00 PM

Shawnee Heights Church

4335 SE 29th Street

Topeka, Kansas 66609

Design, Deluge & Dilemma - Dr. Jonathan Sarfati

December 6, 2014, 7:00 PM

Calvary Chapel Liberty

101 W Shrader Street

Liberty, Missouri 64068

Design, Deluge & Dilemma - Dr. Jonathan Sarfati

December 7, 2014

9:00 AM & 11:00 AM

Morning Star Church

998 N 1771 Road

Lawrence, Kansas 66049

Six Days Really? - Dr. Jonathan Sarfati

December 7th, 2014, 6:00 PM

Morning Star Church
998 N 1771 Road
Lawrence, Kansas 66049

The Alternative: Creation's Competitive Edge
The Most asked Questions Answered!

Dr. Robert Carter

January 25th, 2015, 6:30 PM
Christ Community Church
1100 Kasold Drive
Lawrence, Kansas 66049

¹ <http://creation.com/calendar>

² <http://creation.com/dr-jonathan-sarfati>

³ <http://creation.com/dr-robert-carter>

Ω



2014 Creation Safaris

- March 28 (Friday, 7:30 PM) – Astronomy Safari (cancelled).
- April 25 (Friday, 8:00 PM) – Astronomy Safari.
- April 26 (Saturday) – Southeast Kansas Fossil and Mineral Safari.
- May 30 (Friday, 8:30 PM) – Astronomy Safari.
- May 24 - 26 (Saturday - Monday) – Western Kansas Safari.
- June 7 (Saturday) – Photo/Nature Hike Safari at Overland Park Arboretum.
- June 28 (Saturday, 8:45 PM) – Astronomy Safari (cancelled).
- June 19-21 (Thursday - Saturday) – A float trip down the Ozark River (cancelled).
- July 19 (Saturday) – Kansas University Natural History Museum Safari.
- July 26 (Saturday, 8:45 PM) – Astronomy Safari.
- Rock Bridge / Connor's Cave Safari (not scheduled this year).
- August 16 (Saturday) – Greater KC Fossil Hunt.
- August 22 (Friday, 8:15) – Astronomy Safari.
- Aug 29 - Sept 1 (Friday - Monday) – Southeast Missouri Safari (cancelled).
- September 19 (Friday, 7:30 PM) – Astronomy Safari.
- Safari Zoological Park, Caney, Kansas (not scheduled this year).
- October 18 (Saturday) – Ha Ha Tonka Safari.
- October 24 (Friday, 7:15 PM) – Astronomy Safari.
- Bike Safari on the Katy Trail (not scheduled this year).
- November 21 (Friday, 7:15 PM) – Astronomy Safari.
- November 22 (Saturday) – Squaw Creek National Wildlife Refuge Safari.

You must register for any safari.
For safari details, and to register please visit:
www.csama.org

Astronomy safaris only, call:
(913)-515-6421.

Too far away to attend CSA meetings?

Why not attend via audio or video tape?

Attend CSA Meetings by ordering the audio (\$5) or video (\$13) copy.

A full list of what is available can be found in a link at:

www.csama.org

To order, request by meeting date and topic. Copies of above items may also be borrowed from...

The CSA Lending Library

8904 Mastin

Overland Park, KS 66212

(913) 492-6545

Ha Ha Tonka Safari – 2014

or

“Ha-Ha-Tonka-Smish-Smashonka-Saturnonka”

by Douglas Roger Dexheimer & Paul Fennern

CSA Safaris are always exciting. Some are more exciting than others. I have participated in creation safaris for almost 18 years. We have encountered tornadoes, dust storms, and drought. This latest safari has added a new dimension to our repertoire.

Traditionally, the safari to Ha Ha Tonka State Park (near Camdenton, Missouri) has been a three-day trip. It would begin with a leisurely drive to Camp CUMCITO on Friday afternoon, where we would stay overnight before driving the rest of the way to Ha Ha Tonka on Saturday. After checking out the karst area and visiting a cave, we'd make our customary return trip to camp CUMCITO for an evening meal, a creation lesson, and overnight stay number two. Sunday morning we would breakfast in the camp chapel, participate in a Sunday morning worship service, and conclude our safari at the nearby Chuck Wagon Bar-B-Que.

This year, however, because of the high cost of camping for larger families, we decided to schedule just one day, October 18th, for our safari. Several families had indicated an interest in such a day trip, so three of our CSA safari leaders, Kevin Anderson, Daniel Jacobson, and yours truly started the day "loaded for bear" at 7:00 A.M. at the IHOP restaurant in Grandview, Missouri.

Our first disappointment of the day was a cancellation by one of the families who had planned to join us. The next disappointment was a no-show by one of Kevin's coworkers, who had previously arranged to meet us for breakfast. We decided to continue nonetheless, in order to photograph rock formations and the beautiful autumn colors. The autumn colors were not as spectacular as we'd hoped for (it was probably one or two weeks short of prime colors in the area). To save on fuel expenditures, we decided to ride together in Kevin Anderson's Saturn (*that's his automobile by the way -- not a hijacked planet from our solar system*).

We met our fourth safari leader, Bob Farwell, at the visitor's center at Ha Ha Tonka State Park, at about 11:00.



Our first stop was the Snyder Castle, high on a cliff overlooking the Ha Ha Tonka Spring.



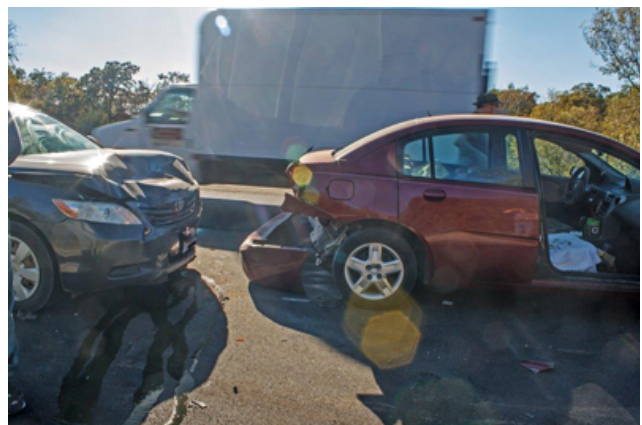
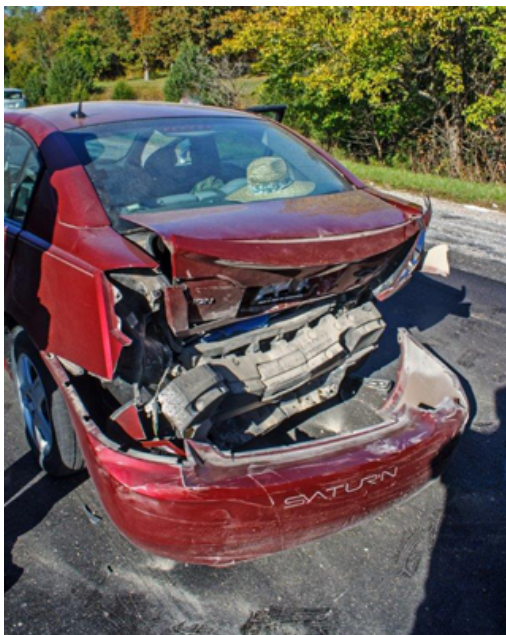
Bob, Daniel, and Kevin took off to explore the quarry from which the stone for the castle had been mined. Following that hike, we drove around to visit the island, and Ha Ha Tonka Spring, which took us about an hour.



At about 2:30, we decided to head for the Truman Dam Museum near Warsaw, Missouri, which museum none of us had ever seen. Bob led the way, followed by the three of us in Kevin's car.

Traffic was light as we approached Warsaw from the south on Highway 65. About 5 miles south of Warsaw, a paving crew was at work on the northbound side of the highway. A number of cars and trucks were stopped on the road, waiting for opposing traffic to pass through the single lane bottleneck.

There were very few signs warning of the road work before we met up with the standing row of cars. Bob came up on the stopped cars and suddenly pulled off the road to the right. Kevin was able to stop his car, short of hitting the car in front of us. Before anyone had a chance to say a thing, Kevin's Saturn (*again, the car, not the planet*) was struck from behind by another car that was going about 40 mph.



Thankfully, no one was injured in either car.

Before the four of us had scrunched into Bob's vehicle and left the scene, we witnessed several more near misses, including one involving a high-speed SUV pulling a boat trailer. That driver swerved, and ended up in the weeds to the right of the paving crew.

After exchanging insurance and driver's license numbers with a Missouri Trooper, we continued on our way. By the time we arrived at Truman Lake Dam, the museum was closed. Being a bit shook up by our "highway demolition derby" experience, we made our way to the Chuck Wagon Bar-B-Que north of Warsaw for dinner, and eventually continued back to our starting point in Grandview, where Daniel and I had left our cars. I took Kevin to his home in Merriam, and I returned to my home in Stanley at about 10:00 P.M.

All's well that ends well... or so they say! 'Twould have been far nicer to have experienced more actual "safari-style" adventures on this safari, but there will likely come future opportunities to see the karst topology. One thing that can be said for certain is that every one of us now has an added testimony of divine protection.

Ω

Are you participating in CSA as much as you should?

"The harvest is plentiful, but the laborers are few."

Are you doing all the Lord has called you to do in the war for the minds and souls of our citizens... especially our youth? CSA is not a closed fraternity. Any born-again believer who is abiding in the words of Jesus, and has been gifted in research, computers, speaking, clerical activities, writing of articles or book reviews, etc., and who has heard a call to serve in an origins ministry should consider and pray about serving with us. Write or call for more information.

Write or call: CSA

22509 State Line Road

Cleveland, MO 64734

Phone: (816) 618-3610

FAX: (816) 658-3253(FAX only - long distance from the KC metro area)

Help Wanted

CSAMA is seeking an editor for, and contributors to, our newsletter. If you are a born-again Christian, believe the Bible is the infallible word of God, subscribe to the literal 7-day creationist viewpoint, if you have researching and writing skills, and if you have suitable ideas for articles to contribute to our publication and can meet a monthly deadline schedule, please contact the newsletter webmaster via the link at www.csama.org.

You are invited to attend all of the monthly meetings, and as many of the safaris as you can fit into your schedule. Pass the word. Tell your friends and neighbors about CSAMA and our activities. Show them how to subscribe to the **CSAMA Newsletter**.

Never miss an opportunity to debunk the "millions-of-years" notion that evolutionists insist is necessary for life as we know it.

We'd love to hear from you!

If you have questions or comments, or if you have suggestions for making our newsletter better, please feel free to contact us. We'll do our best to respond to every query. THANK YOU!

(Use the editor link on the contact page at www.csama.org.)

Contact & Info Link

- Subscribe or manage subscription.
- View current and archived printable issues of CSA News.
- Download the CSA Creation Audiovisual Lending Library list.
- Get details about upcoming CSAMA events.
- Send questions, comments, suggestions to the editor.
- And more, via the CSAMA web site.

www.csama.org

Quick unsubscribing link at the bottom of the most recent newsletter.